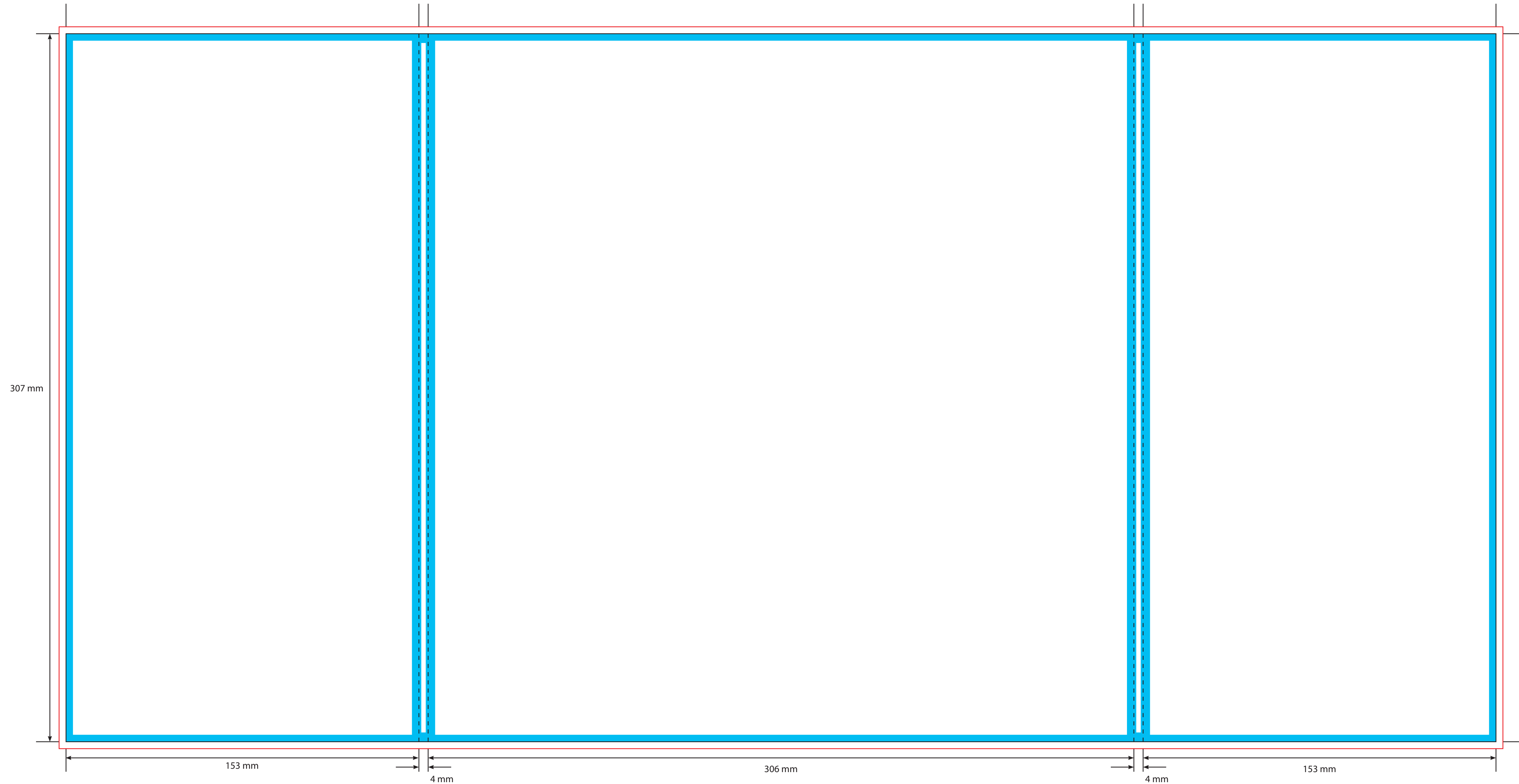
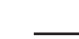
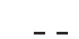




OUTER



KEY

-  Trim Line
-  Fold Line
-  3mm Safety Area - Important text and logos should not be in this area.
-  3mm Required Bleed Area - Background should extend to this line.

AVAILABLE CARD STOCKS \*

- 300gsm White/White > Standard
- 300gsm White/Brown
- 280gsm White/Grey
- 350gsm White/White
- 425gsm White/Brown

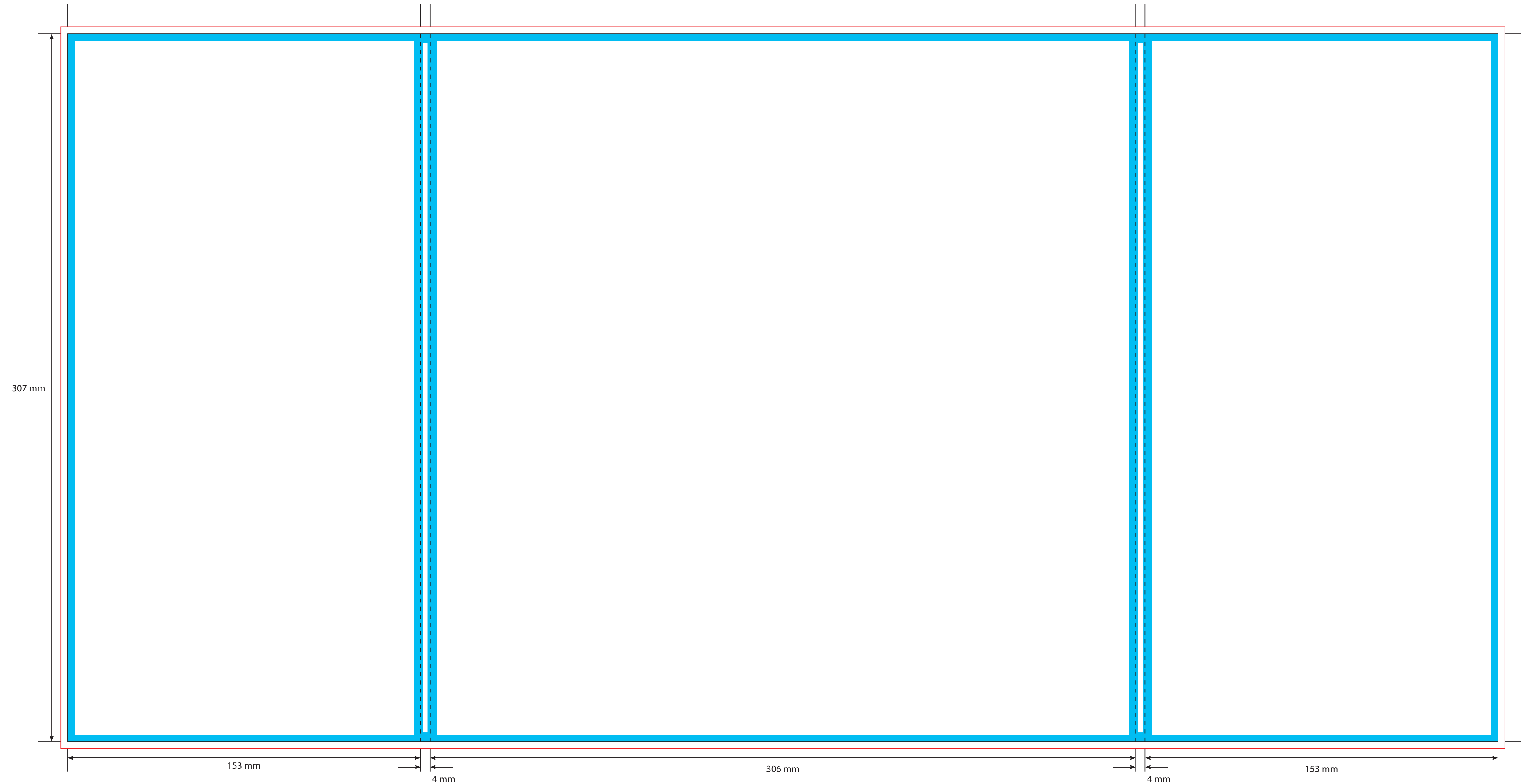
CARD FINISHES AVAILABLE

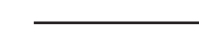
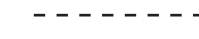


- Gloss Machine Varnish > Standard
- Matt Machine Varnish
- Reverse Board (Uncoated)
- Gloss Lamination
- Matt Lamination
- Anti-Scratch Matt Lamination
- Special Lamination
- (i.e. Holographic Lamination)

Please click [here](#) for useful information on the best way to set up and supply your artwork.  
For any further questions please email our design team [here](#).

Please ask your account manager if you would like to change the stock and/or finish, prices will vary.  
\* Please note, not all card stocks are available on all templates. Please check with your sales contact.

INNER



- KEY**
-  Trim Line
  -  Fold Line
  -  3mm Safety Area - Important text and logos should not be in this area.
  -  3mm Required Bleed Area - Background should extend to this line.

**AVAILABLE CARD STOCKS \***

- 300gsm White/White > Standard
- 300gsm White/Brown
- 280gsm White/Grey
- 350gsm White/White
- 425gsm White/Brown

**CARD FINISHES AVAILABLE**

- Gloss Machine Varnish > Standard
- Matt Machine Varnish
- Reverse Board (Uncoated)
- Gloss Lamination
- Matt Lamination
- Anti-Scratch Matt Lamination
- Special Lamination
- (i.e. Holographic Lamination)

Please click [here](#) for useful information on the best way to set up and supply your artwork.  
For any further questions please email our design team [here](#).

Please ask your account manager if you would like to change the stock and/or finish, prices will vary.  
\* Please note, not all card stocks are available on all templates. Please check with your sales contact.